

# IKE 3

## Fieldcraft Guide



This page is intentionally blank.

## Stay Up to Date and Get Support

- Software Updates
- Manuals and Tutorials
- Videos

**[www.ikegps.com/support](http://www.ikegps.com/support)**

ActiveSync, Excel, Internet Explorer, Microsoft, Outlook, PowerPoint, Visual Studio, Windows, Windows Media, Windows Mobile, Windows Mobile Device Center, Windows XP, Windows Vista, Windows 7, and the Windows logo are trademarks or registered trademarks of Microsoft Corporation in the United States and/or other countries.

The Bluetooth® word mark is owned by the Bluetooth SIG, Inc. and any use of such marks by ikeGPS Ltd. is under license.

Acrobat and Reader are registered trademarks of Adobe Systems Incorporated in the United States and/or other countries.

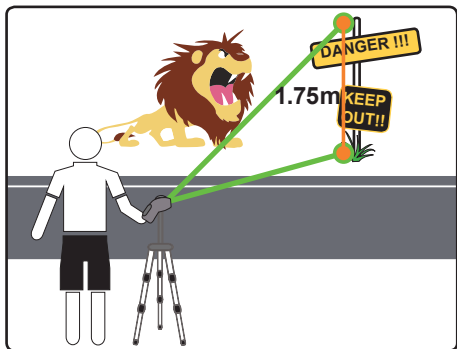
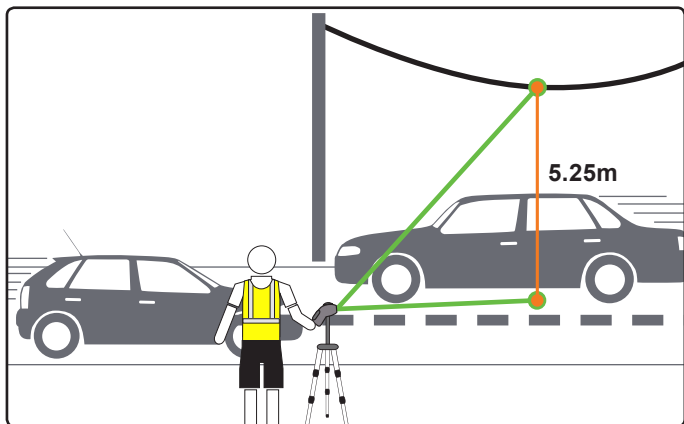
The names of actual companies and products mentioned herein may be the trademarks of their respective owners.

Copyright © 2015 ike<sup>GPS</sup>. All rights reserved.



## What Does IKE Do?

The IKE is a rugged mobile device that measures locations and dimensions of remote targets.



# Turning On and Off

## ON

Running time  $\approx$  1 working day



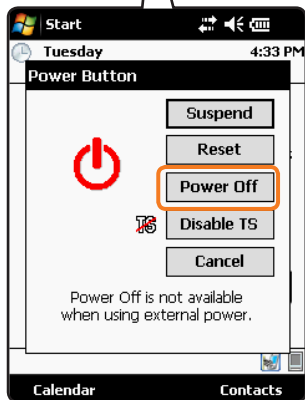
## Suspend Mode

- Instant Start - Memory kept
- Suspend time  $\approx$  2 days
- Instant startup



## Full Power Off

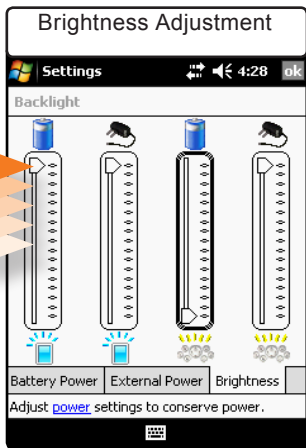
- Full shutdown of IKE
- Reboot on start up  $\approx$  45s



# Improve Screen Visibility

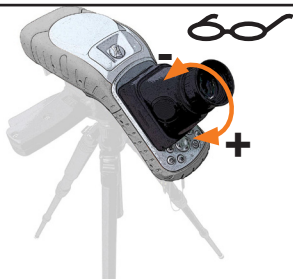
## Screen Brightness - Make it brighter

- Start>
- Settings>
- System Tab>
- Backlight>
- Brightness Tab>



## The Glare Shield

Turn the eyepiece to adjust focus

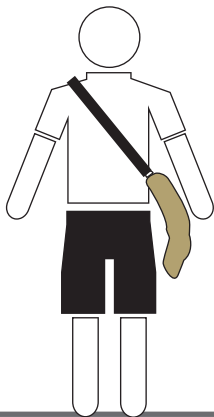


Blocks sunlight to allow low screen brightness



# Extra Protection

**Hands Free -  
Shoulder Strap**



**Extra protection  
for screen and  
lenses**



Add a screen protector  
to minimise wear



Sun visor for  
camera and laser

Stylus holder

# GPS Performance

**Autonomous IKE  
Basic**

**3D Fix**

Maximum  
Accuracy\*: 3.5m

**GPS+ IKE Pro/  
Solutions**

**3D Fix +**



Maximum  
Accuracy\*: 1.5m

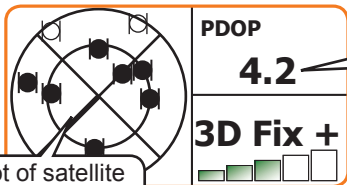
**SBAS+ IKE Pro/  
Solutions**

**SBAS +**



Maximum  
Accuracy\*: <1.0m

\* Accuracy is CEP - 50% of time



Lower = Better

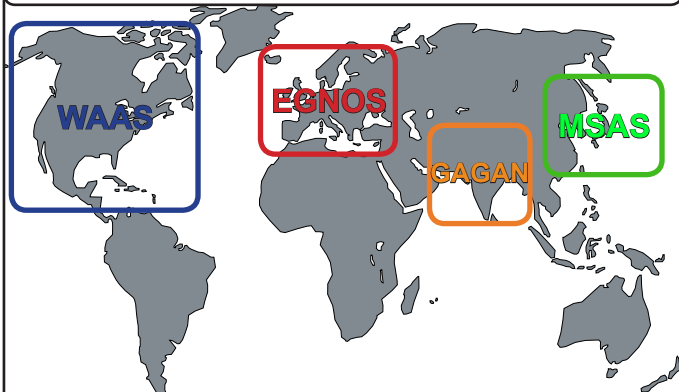
1-2 Good  
3-6 Moderate  
>6 Poor

Plot of satellite  
locations



# GPS Performance

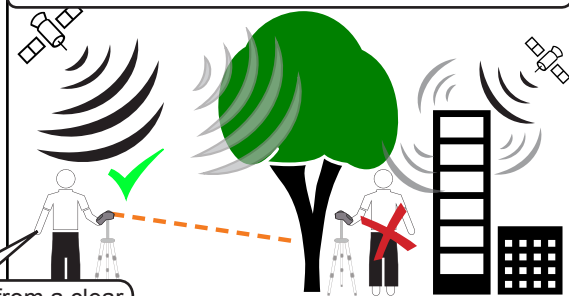
## SBAS Coverage Map



### Non-SBAS areas

Only use 'Enable SBAS' if inside an SBAS coverage area

## Trees and Buildings will degrade GPS signals

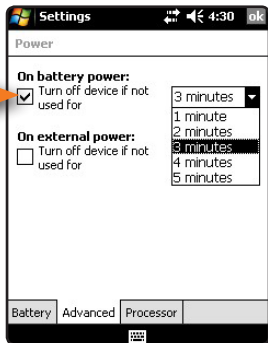


Laser in from a clear position

# Extend Battery Life

- Put in 'Full Power Off' mode if storing.
- Enable Auto Power Off \*

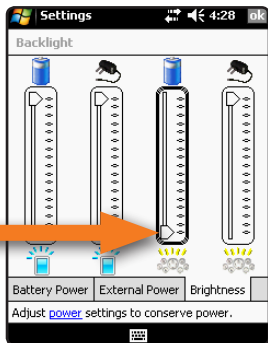
Start>  
Settings>  
System Tab>  
Power>  
Advanced Tab>



\* Puts IKE into 'Suspend' mode after a preset time.

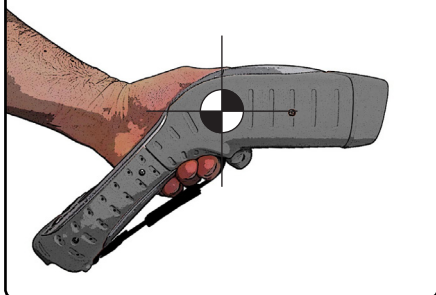
- Turn off the keypad backlight

Start>  
Settings>  
System Tab>  
Backlight>  
Brightness Tab>

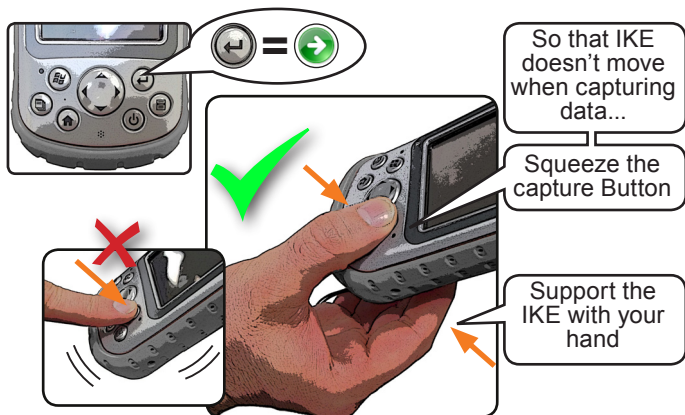


## Using IKE Handheld

Improve your handheld stability  
- Find the balance point

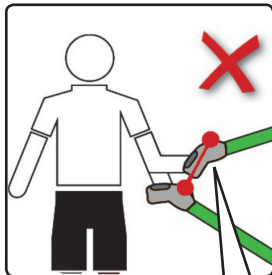
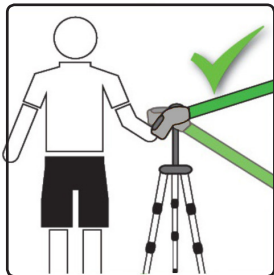


## Squeeze the Button



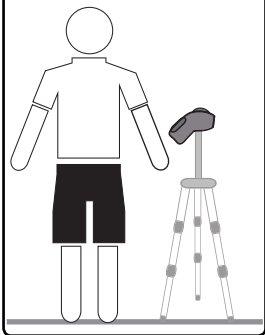
## Getting the Best Measurements

Keep the IKE center still. Use a low magnetic signature tripod for the best measurements.



Movement adds error

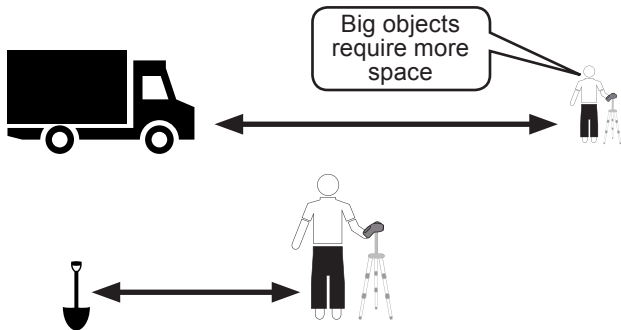
### Tripod



- Best Stability
- Hands free operation

## Compass Accuracy

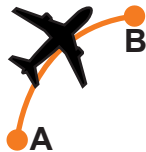
Keep away from large steel objects to minimize magnetic interference



### When to Calibrate



Once a month



Travel

### How to Calibrate

Instructions on the calibration process can be found by clicking the Compass Calibration icon on your IKE unit.

# Targeting Thin Objects

The image displays two screenshots from a targeting application. The top screenshot, titled 'Wires', shows a crosshair centered on a wire. Three callout boxes indicate 'Too High', 'On Target', and 'Too Low' with corresponding distance measurements. A green arrow points to the 'On Target' callout. A data panel at the bottom shows a distance of 15.7M and a bearing of 105.3°T. The bottom screenshot, titled 'Poles', shows a crosshair centered on a pole. Three callout boxes indicate 'Left of Pole', 'On Target', and 'Right of Pole' with distance measurements. A green arrow points to the 'On Target' callout. A data panel at the bottom shows a distance of 16.5M and a bearing of 119.6°T. A callout box points to the 'On Target' callout with the text 'Use the live laser distance as a guide.'

**Wires**

Too High

On Target

Distance **15.7M**

Too Low

Distance **15.7M**

Bearing **105.3°T**

PDOP **2.2**

GPS Fix **3D Fix**

Move the crosshairs over the target to make sure you are hitting it

**Poles**

Left of Pole

Distance **134.9M**

On Target

Distance **16.5M**

Right of Pole

Distance **137.6M**

Distance **16.5M**

Bearing **119.6°T**

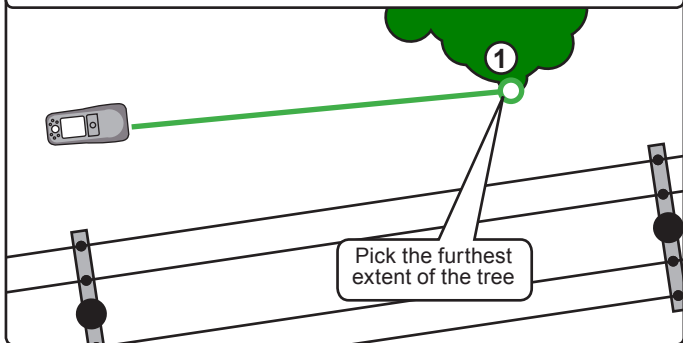
PDOP **2.1**

GPS Fix **3D Fix**

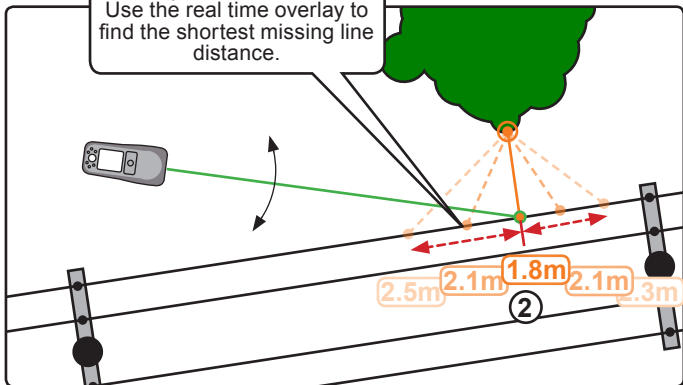
Use the live laser distance as a guide.

# Over Head Line Clearance

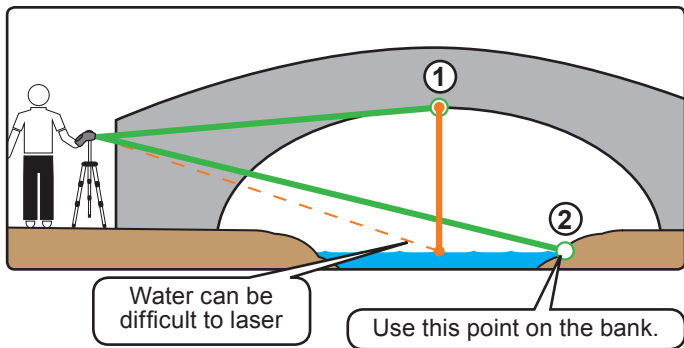
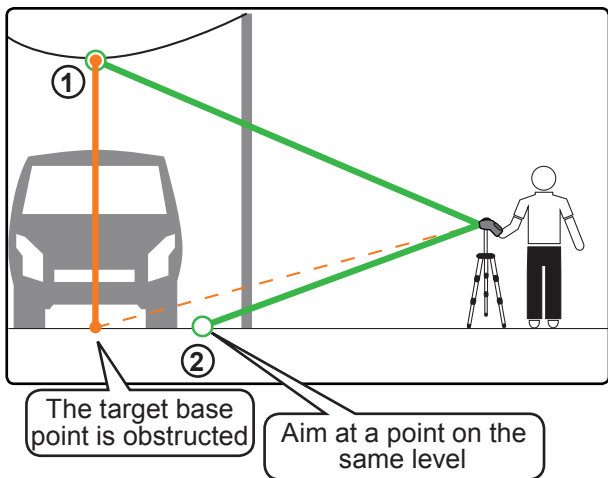
Use the 'Missing Line' tool to find the minimum tree-wire clearance.



Track up and down the wire. Use the real time overlay to find the shortest missing line distance.

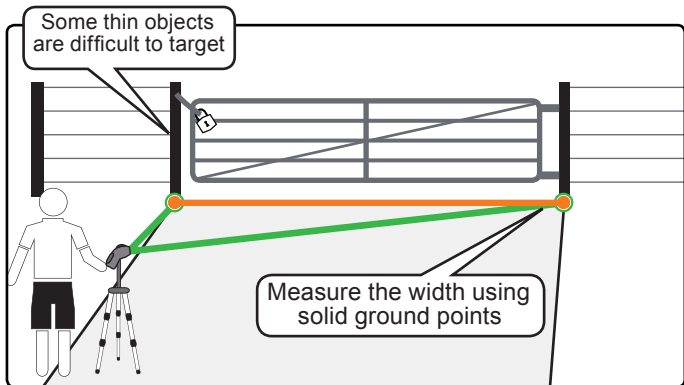


## Span Height

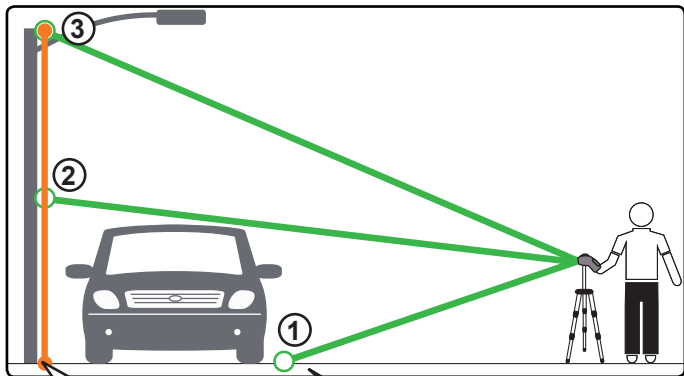




## Missing Line



## 3 Shot Height



Use the first shot to capture a point at the same level

# Improve Your Photos

## Manual Exposure Adjustment

Back lighting can cause difficulties with exposure.



Choose the exposure level that best meets your needs

Darker



Lighter

Recapture the image with the new exposure setting.

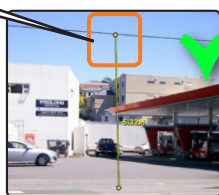
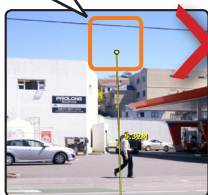


# Measurement Overlays

Wait until the measurement overlay is positioned correctly before taking the photo.

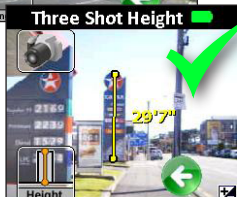
## Overlay Position

For best results use the tripod



## Compose your photos

Adjust the camera position to ensure the measurement is completely within the photo.



# Speeding Up Capture Data

## Turn on Auto Proceed



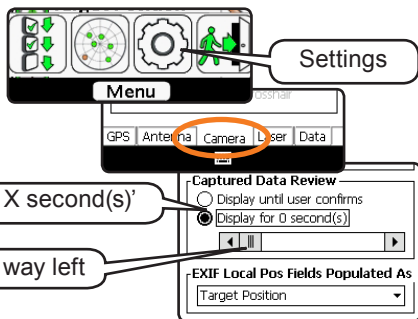
Automatically advances to the next field in the form.

Target Position	
Target Position task	
Label	
Comment	



You can always get back to the form by tapping 'cancel'

## Turn off the camera review in IKE



Select 'Display for X second(s)'

Slider all the way left

The camera will no longer ask to review and accept each image.

This page is intentionally blank.

This page is intentionally blank.

This page is intentionally blank.



For more information, contact us on [support@ikegps.com](mailto:support@ikegps.com),  
or visit our website [www.ikegps.com](http://www.ikegps.com)

ike Corporate Headquarters  
Level One, 42 Adelaide Road  
Wellington 6021, New Zealand  
office: +64 4 382 8064  
fax: +64 4 382 8205

ike US Headquarters  
350 Interlocken Blvd., Suite 250  
Broomfield, CO 80021 USA  
office: +1 303 222 3218

