

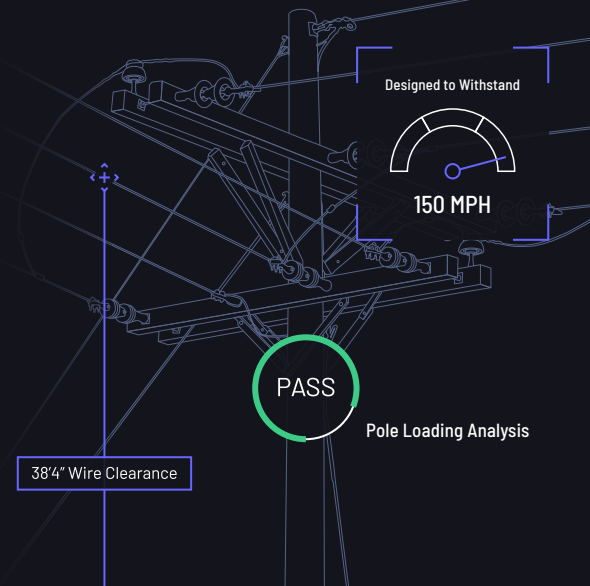


PoleForeman

an IKE Structural product

Industry leading software for classing utility poles, calculating clearance measurements, and performing joint use analysis

PoleForeman and SagLine provides Pole Loading Analysis for designers at utility, telecom, and engineering service providers who want accurate and consistent analysis that enforces company specific standards and compliance with minimum NESC requirements.



Core Benefits



Simple, accurate, and consistent



Proven technology with over 20 years of industry usage



Training available by industry experts upon request



Integrated with the IKE product suite

Project Use Cases

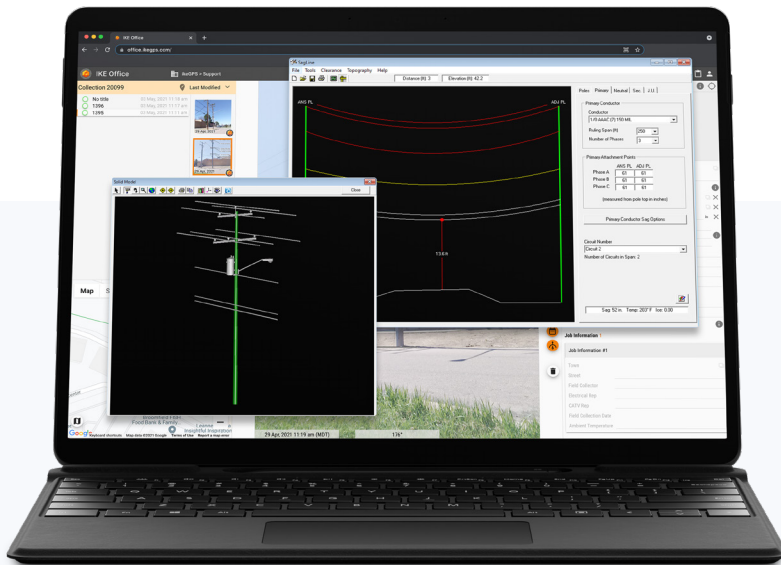
Overhead distribution line design and maintenance

NESC pole loading analysis based on your company's design standards

Joint Use / Make Ready analysis

NESC clearance measurements utilizing your company's conductor sag and tension charts

Storm Hardening analysis



PoleForeman Training

If you have a basic knowledge of overhead line design and prefer to skip the formal training, get started with the PoleForeman and SagLine User's Guide (included with the software). The User's Guides will step you through the fundamentals of both programs.

For those that prefer an interactive hands on training lead by industry experts, we have two options.



Live online training

8hrs, 20 participant maximum per class



In-person, on-site training

8hrs, 20 participant maximum per class

Don't risk it.

Pole failures cause power and communication outages! Outages irritate customers, causes lost revenue, increases operation and maintenance costs, disrupts work schedules, and can be source of lawsuits.



Major changes to the facilities on a structure require a pole load analysis (PLA). It's all about safety and grid integrity."



Malcolm Young, PE

SVP Structural Analysis, ikeGPS

Program Specs

Program Size:

Approximately 100MB

NESC Editions:

2002, 2007, 2012, 2017

Custom Database Configuration Time:

4-6 weeks

System/ Hardware Requirements:

Windows 7, and Windows 10

4 GB RAM recommended

Minimum screen resolution: 1024x768

Adobe Acrobat Reader

What do you need?

- ✓ PoleForeman
- ✓ Database
- ✓ SagLine
- ✓ Training
(Optional, but recommended)

Request a trial at <https://ikegps.com/ike-structural/>

Purchasing and Setup Options

Software license, per computer

(Enterprise Licensing available)

Annual maintenance and support contract

Provides licensed users with the latest NESC updates, tech support, and product updates

Database Options

Option 1: Custom database configuration built on your company's standards

Option 2: Provide an existing client's pre-built database. Requires a release authorization from the database owner.

Option 3: RUS (Rural Utilities Service) database configured with RUS standards (public domain, no release authorization requirements)

1 Million+

poles in PoleForeman and SagLine and counting

Enterprise deployments

at the largest Investor Owned Utility (IOU) and largest Electric Cooperative (Co-op) in the United States

Connect with IKE



Sales

1-303-222-3218, ext. 2
solutions@ikegps.com



Support

1-205-618-7800
poleforeman-support@ikegps.com



Visit the Website

<https://ikegps.com/ike-structural/>

The PoleOS™ Company

We help our customers rise by providing a comprehensive suite of products that enable dramatic productivity benefits when working with utility poles.

IKE Solutions

[IKE Office Pro](#) / [PoleForeman](#) / [IKE Insight](#)

IKE Services

[IKE Analyze](#) / [IKE University](#)



350 Interlocken Boulevard, Suite 390
Broomfield, CO 80021
+1 303-222-3218
www.ikegps.com